

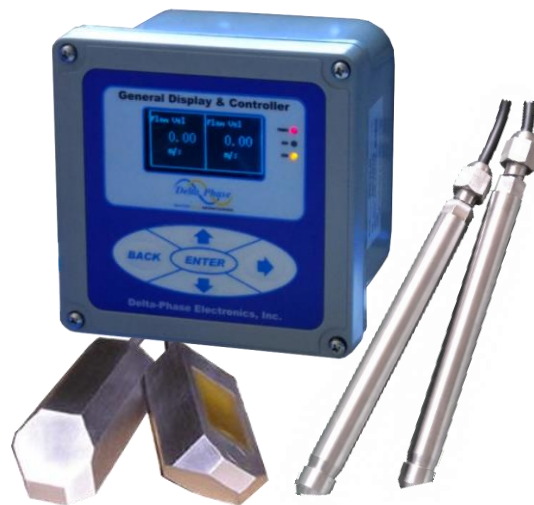
ULTRASONIC FLOW

Alpha3000: Ultrasonic Transit-Time Flowmeter

Digital technology for optimized measures

TYPICAL APPLICATIONS

- Water, sea water, river water.
- Industry process water
- Outlet of WWTP



The Alpha 3000 Transit-Time flowmeter combines digital signal processing (DSP) with correlation detection methods. The Alpha 3000 is designed to work on clean and dirty fluids ranging from distilled products to multi-phase crude oil and water mixtures. Difficult applications include oil production, cryogenic and custody transfer. Available in single channel or multi-channel, this Transit-Time flow measurement instrument is configurable as a clamp-on or insertion model. When combined with Mass Flow Computer temperature or density compensations with RS485 communications can be realized.

Other Features Include:

- ❖ No moving parts to wear out.
- ❖ The non-intrusive clamp-on transducer can be installed without flow interruption to insure leak free measurements with zero pressure drop.
- ❖ Insertion transducer can be installed with hot-tap alignment or spool piece for custody transfer applications.
- ❖ High accuracy
- ❖ Optional:
 - Dual Channel measuring system;
 - Spool Piece or flow tube fabrication.
 - Insertion sensor.

DELTA-PHASE ELECTRONICS, INC.

1502 E. Warner Ave., Suite B, Santa Ana, CA 92705 U.S.A. TEL: (714) 866-8070 www.delta-phase.us

SPECIFICATIONS

Performance Specification

Flow Range: Up to ± 0.1 to 50 FPS (± 0.03 to 15m/s) Consult factory for higher range.
 Accuracy: To $\pm 0.5\%$ of velocity or ± 0.05 FPS (0.0152MPS), typical on a calibrated system/digital output. (Depending on fluid conditions)
 Sensitivity: 0.001 FPS (0.3 mm per sec) at any flow rate including zero.
 Linearity: To $\pm 0.25\%$ of scale, digital output.
 Fluid: From clean liquids to multiphase liquids with gases. (Consult factory for multi- phase liquids with gases applications.)

Functional Specification

Power Supply: 90 to 240 VAC, 50/60 Hz,
 18 to 36 VDC (Optional)
 Keypad: 5-key with tactile action.
 Display: OLED screen, include present and total flow, velocity, signal strength, and ΔT .
 Outputs: Analog 4 to 20MA (Max. 600 Ω)
 Isolated Pulse
 Two SPDT Relays for limit or system alarm, 5A@250VAC / 5A@30VDC
 Digital Interface RS485 Modbus RTU

Physical Specification

Transmitter: IP66, Polycarbonate material
 Temperature: -40 to 158 °F (-40 to 70 °C), electronic unit.
 Humidity: 0 to 100% R.H.

Transducer Specification

Temperature: -40 to 158°F (-40 to 70°C)
 Wetted Materials: 316 SS and plastic

π style Spool piece

Pipe size: 1/2 to 3 inch (15mm to 80mm)
 Materials: Stainless Steel
 Encloser Sealing IP68

Tilted Diameter Spool piece

Pipe size: 4 to 12 inch (100mm to 300mm)
 Materials: 316SS
 Encloser Sealing IP68

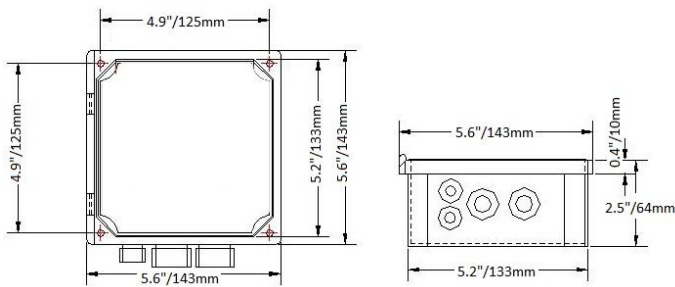
Clamp-On Sensor

Pipe size: 2 to 80 inch (50mm to 2000mm)
 Materials: 316SS
 Encloser Sealing IP68

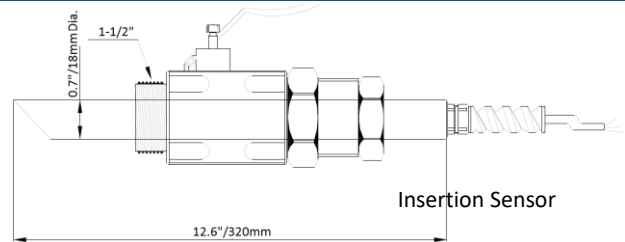
Insertion Sensor

Pipe size: 3 to 160 inch (80mm to 4000mm)
 Materials: 316SS
 Encloser Sealing IP68

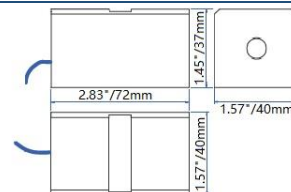
DIMENSION



Transmitter



Insertion Sensor



Clamp-On Sensor



DELTA-PHASE ELECTRONICS, INC.

1502 E. Warner Ave., Suite B, Santa Ana, CA 92705 U.S.A. TEL: (714) 866-8070 www.delta-phase.us